

DUCO's **burglary-resistant** solutions

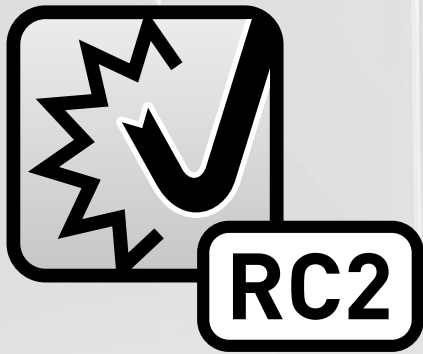
Grilles, louver walls and louver doors with resistance class RC2



- Complete range of louvres
- Complies with European RC2 regulation
- Grilles, continuous louver walls and louver doors

DUCO

We inspire at www.duco.eu



DUCO's burglary-resistant **global solutions**

As a manufacturer of grilles and louvre wall systems, among others, DUCO offers a number of **innovative, patented solutions** within its range to meet **resistance class RC2** in accordance with European standards. DUCO has quite a few burglary-resistant solutions available that are extremely suitable for **night ventilation / purge ventilation**.

DUCO's burglary-resistant grilles, continuous louvre walls and doors can be used in **access areas, data centres, bicycle sheds, installations, technical rooms ...**

Test reports of all products are available on request.



Burglary-resistant GRILLES



++ G 30Z
prEN 1627
through 1630

++ M 30Z
EN 1627:2011
NEN 5096: 2007

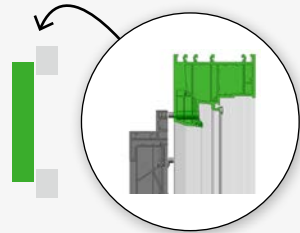
DucoGrille **Solid++ 30Z**

This intrusion-resistant grille with reinforced frame section and sturdy Solid 30Z louvres is available both as a **recessed mounted or surface-mounted grille**.

++ G 30Z
Recessed
mounted
wall louvre
with flange



++ M 30Z
Surface-mounted
wall louvre to
be mounted on
a window frame



DucoGrille **Solid ISO 30Z**

The DucoGrille Solid ISO 30Z is a window louvre that is both architecturally aesthetic and has **good thermal insulation**. The window louvre can be connected to both round and rectangular air ducts.

NEN 5096:2007
&
EN 1627:2011



NEN 5096:2012
&
EN 1627:2011

DucoGrille **NightVent**

The DucoGrille NightVent is a **glass-replacing ventilation hatch** which, because it supplies large ventilation flows ensures efficient cooling of any building. The DucoGrille NightVent consists of an burglary-resistant and insect-resistant external louvre grille, and an inner panel with a flat finish.



Intrusion-resistant **CONTINUOUS LOUVRE WALL SYSTEMS**



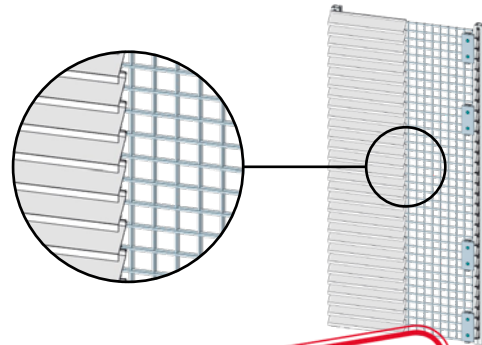
DucoWall

DUCO has developed a **broad and innovative range** of continuous louvre wall systems: water resistant, with high ventilation capacity and sound absorbing...

From now on, **any type of continuous louvre wall can be made intrusion-resistant**, by incorporating DUCO's patented solution. This brings the louvre wall into compliance with the RC2 resistance class according to European regulations. This compact solution also ensures that the **recess depth of the RC2 louvre wall remains the same in comparison with standard louvre walls**, which guarantees a **uniform façade**.

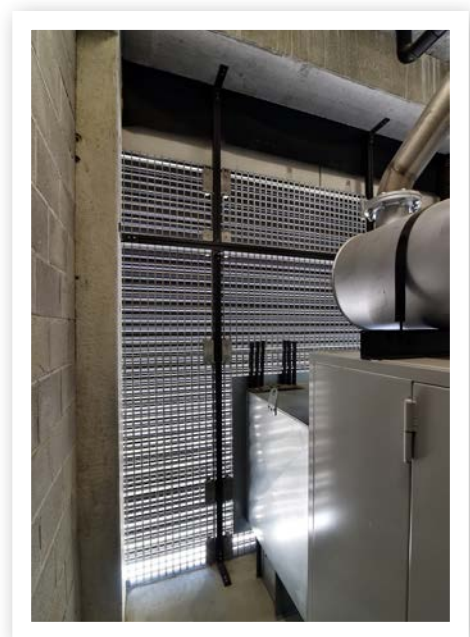
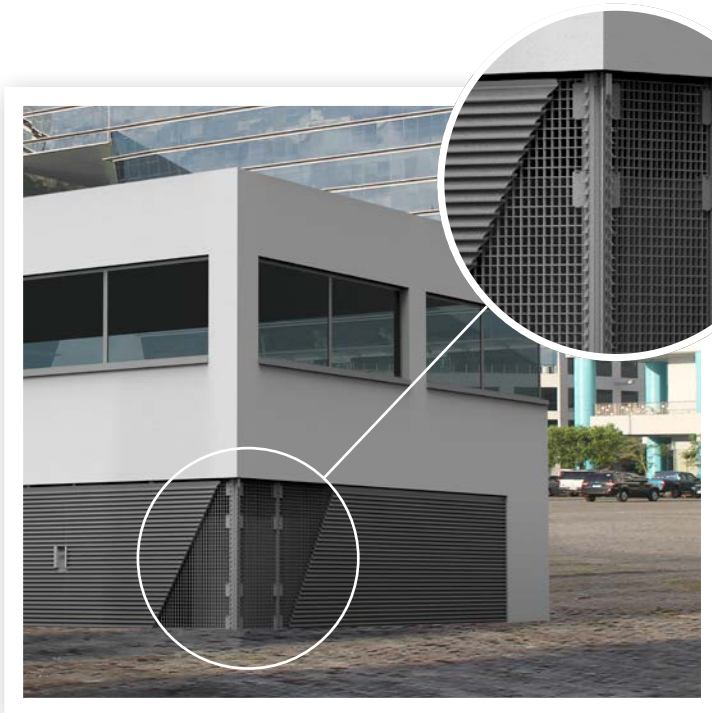
Furthermore, the louvre walls can be **combined with DucoDoor louvre doors**, which are also available in a burglary-resistant version.

NEW



PATENTED

EN 1627:2011
&
NEN 5096:2012
+ A1:2015



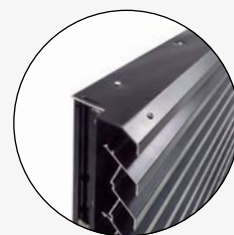
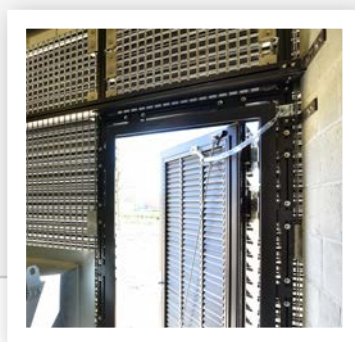
Burglary-resistant **LOUVRE DOORS**

DUCO's louvre doors are ideal in combination with DUCO's louvre wall system for a tight, uniform façade. They are available as a ventilating louvre door or as a (draught-proof) false louvre door.



DucoDoor Louvre

This type of louvre door can be easily concealed in the louvre wall as almost the **entire range of Solid, Classic, Acoustic and Screening louvres** can be used.



DucoDoor Grille

As a **free standing access door**, the DucoDoor Grille is perfectly suited to non-louvre walls, such as in plant rooms.

All DucoDoor doors are made to measure and are available in up to 3 m useful height and width.





DUCO'S SOLUTIONS

Discover our products in these brochures:

Call +32 58 33 00 66
or send an email to info@duco.eu

We will be happy to provide you with any further information on our products and new developments.



DUCO

We inspire at www.duco.eu